



- ▶ **MICROmote®** -sensor for water detection
- ▶ **Wavelength matches with the absorption spectrum of water**
- ▶ **Reacts also on hydrous liquids and vapours**
- ▶ **For reliable and precise level detection**
- ▶ **For detection of bubbles in transparent tubes or capillaries**

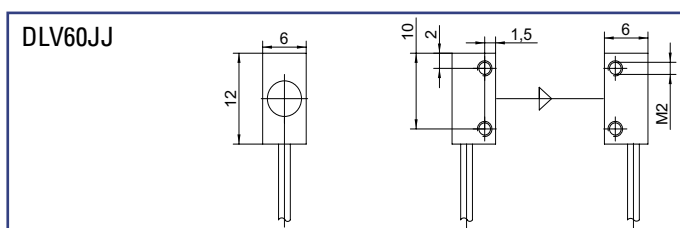


**THROUGH BEAM SENSOR  
for separate amplifier**

▶ **TECHNICAL DATA**

<b>MODEL</b>	<b>DLV60JJ</b>
<b>Light type</b>	infrared 1480nm
<b>Operating temperature</b>	-10°C to +55°C
<b>Protection class</b>	IP67
<b>Sensing distance</b>	500mm
<b>Connection</b>	PUR-cable with connector
<b>Dimensions</b>	6mm x 6mm x 12mm
<b>Housing material</b>	nickel-plated brass
<b>Mounting</b>	for screw-in fixture

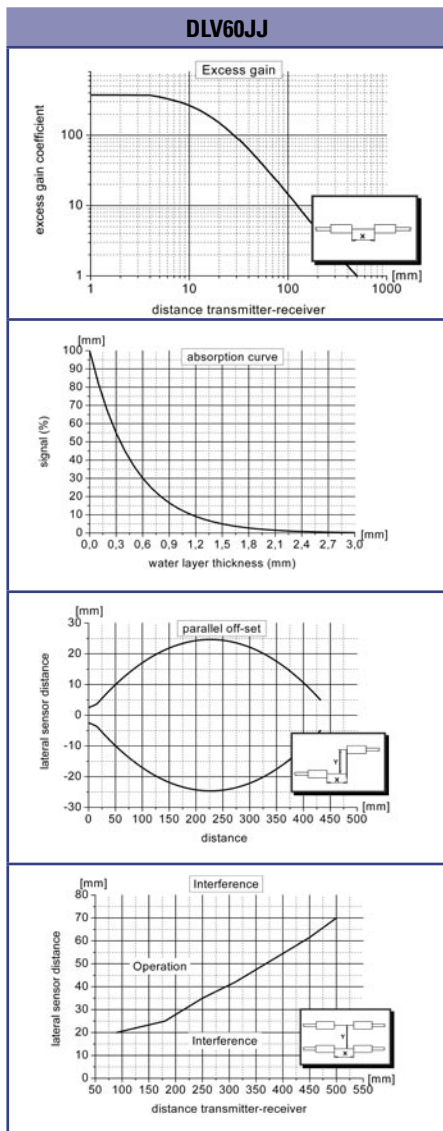
▶ **DIMENSIONS** Measurements in mm. Subject to technical change.





**DLV60JJ**

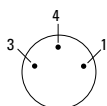
► **GRAPHS** (All Graphs showing typical data with STM amplifier.)



► **PIN CONNECTION**

option - 0: M8, 3pin (standard)

- 3 + receiver (green)
- 4 GND/shielding (white, black)
- 1 + emitter (red)



connector side

	<p><b>jacket material</b>  <b>P</b>: PUR-cable black ø 1,8mm  <b>F</b>: highly flexible PUR-cable red ø 1,1mm</p>	<p><b>connector</b>  <b>0</b>: M8 - connector 3pin                  special model available on request</p>	<p><b>cable length</b> (specification in [m])                  - standard length 1m (emitter and receiver side each)                  - special cable length available on request</p>
<b>PART DESIGNATION</b>	<b>Model</b> - [ ] - [ ] : [ ]		
<b>ORDER EXAMPLE</b>	<b>DLV60JJ - P - 0 : 1m</b> = DLV60 watersensor infrared - PUR-cable black - M8, 3pin : cable length 1m		
	Please note, for correct operation, a separate amplifier is required.		