



- ▶ MICROmote®-sensor for separate amplifier in cuboid design
- ▶ Especially compact through-beam sensors with long range
- ▶ High power reserve in uses at short distances
- ▶ Super-flexible connection lead
- ▶ Robust metal housing



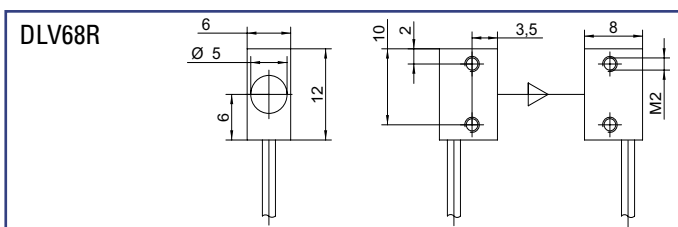
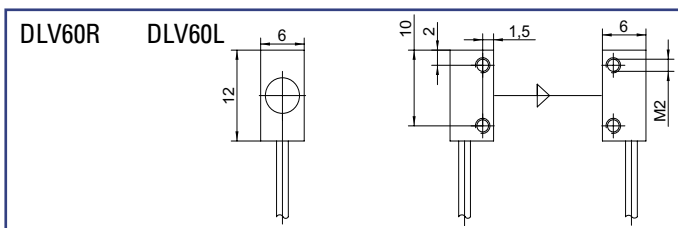
**THROUGH BEAM SENSOR
for separate amplifier**

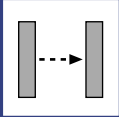
▶ **TECHNICAL DATA**

MODEL	DLV60R	DLV60L	DLV68R
Light type	red 660nm	infrared 880nm	red 660nm
Operating temperature	-10°C to +55°C		
Protection class	IP65		
Sensing distance	1000mm	2000mm	4000mm
Smallest object*	0,1mm	0,1mm	0,1mm
Connection	PUR-cable with connector		
Dimensions	6mm x 6mm x 12mm	6mm x 6mm x 12mm	6mm x 8mm x 12mm
Housing material	nickel-plated brass		
Mounting	for screw-in fixture		

* Ø copper wire of infinite length. Depending on adjustment and sensing distance (see graphs).

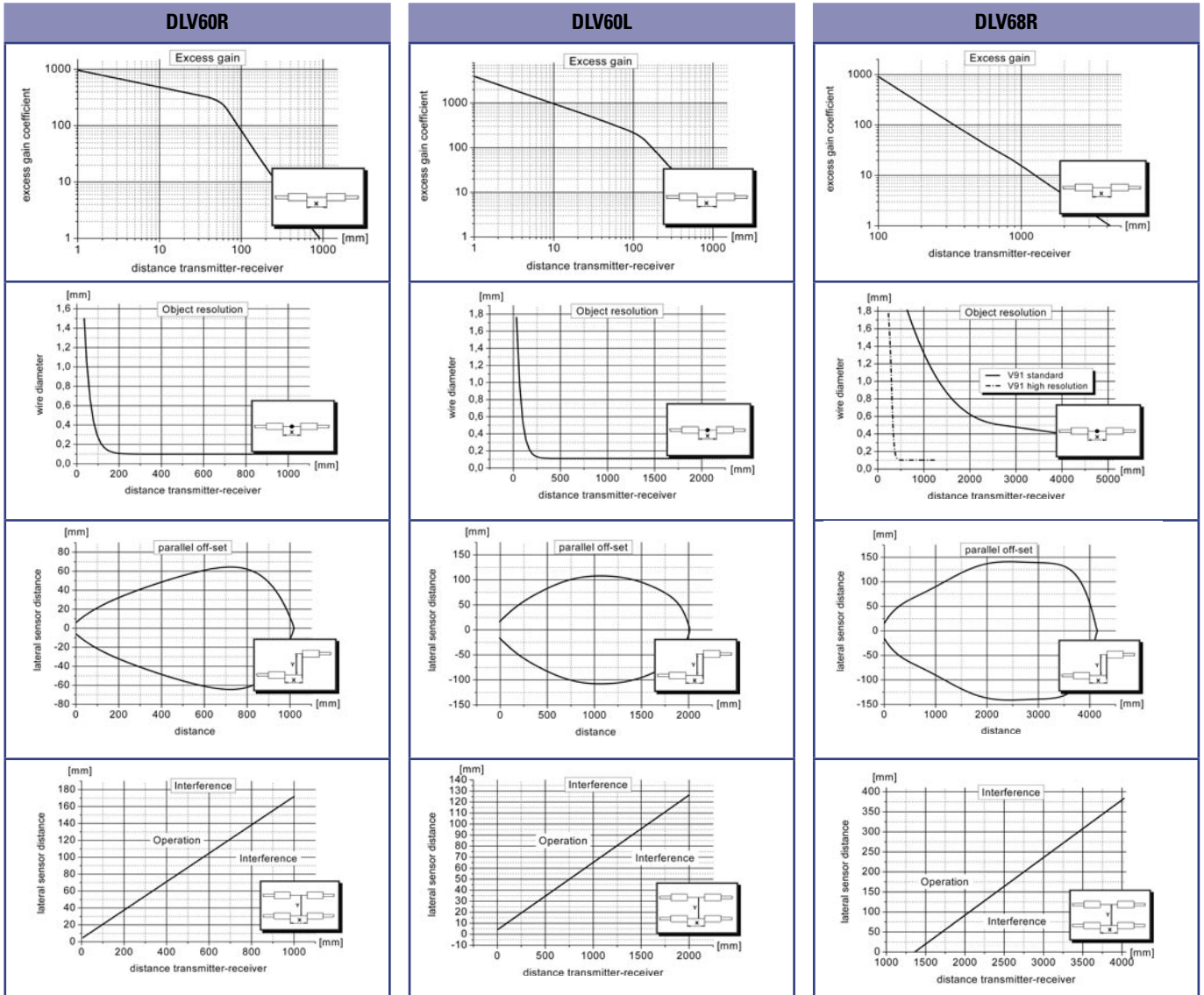
▶ **DIMENSIONS** Measurements in mm. Subject to technical change.





DLV60R | DLV60L | DLV68R

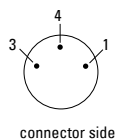
► **GRAPHS** (All Graphs showing typical data with STM amplifier.)



► **PIN CONNECTION**

option - 0: M8, 3pin (standard)

- 3 + receiver (green)
- 4 GND/shielding (white, black)
- 1 + emitter (red)



PART DESIGNATION	<p>jacket material</p> <ul style="list-style-type: none"> P: PUR-cable black ø 1,8mm F: highly flexible PUR-cable red ø 1,1mm 	<p>connector</p> <ul style="list-style-type: none"> 0: M8 - connector 3pin special model available on request 	<p>cable length (specification in [m])</p> <ul style="list-style-type: none"> standard length 1m (emitter and receiver side each) special cable length available on request
	<p>Model - [] - [] : []</p>	<p>ORDER EXAMPLE DLV60R - P - 0 : 1m = DLV60 red light - PUR-cable black - M8, 3pin : cable length 1m</p> <p>Please note, for correct operation, a separate amplifier is required.</p>	