



- ▶ **MICROmote®** -sensor for water detection
- ▶ **Wavelength matches with the absorption spectrum of water**
- ▶ **For reliable and precise level detection in transparent containers**
- ▶ **High excess gain on short distances**
- ▶ **Robust metal housing**

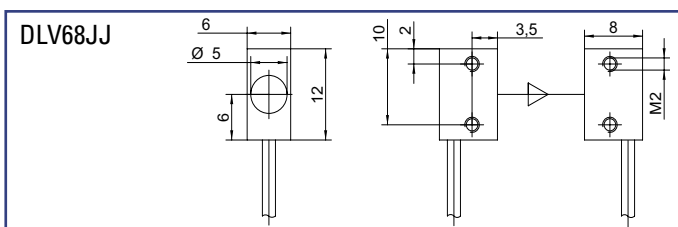


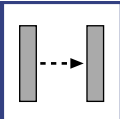
**THROUGH BEAM SENSOR
for separate amplifier**

▶ **TECHNICAL DATA**

MODEL	DLV68JJ
Light type	infrared 1480nm
Operating temperature	-10°C to +55°C
Protection class	IP67
Sensing distance	900mm
Connection	PUR-cable with connector
Dimensions	6mm x 8mm x 12mm
Housing material	nickel-plated brass
Mounting	for screw-in fixture

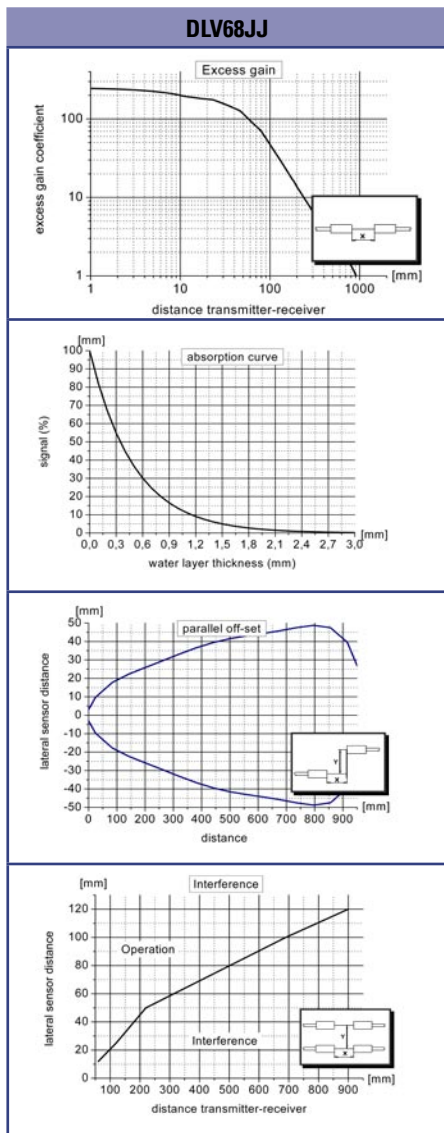
▶ **DIMENSIONS** Measurements in mm. Subject to technical change.





DLV68JJ

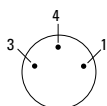
► **GRAPHS** (All Graphs showing typical data with STM amplifier.)



► **PIN CONNECTION**

option - 0: M8, 3pin (standard)

- 3 + receiver (green)
- 4 GND/shielding (white, black)
- 1 + emitter (red)



connector side

	<p>jacket material P: PUR-cable black \varnothing 1,8mm F: highly flexible PUR-cable red \varnothing 1,1mm</p>	<p>connector 0: M8 - connector 3pin special model available on request</p>	<p>cable length (specification in [m]) - standard length 1m (emitter and receiver side each) - special cable length available on request</p>
PART DESIGNATION	<p>Model - <input type="text"/> - <input type="text"/> : <input type="text"/></p>		
ORDER EXAMPLE	<p>DLV68JJ - P - 0 : 1m = DLV68 watersensor infrared - PUR-cable black - M8, 3pin : cable length 1m</p> <p>Please note, for correct operation, a separate amplifier is required.</p>		