



- ▶ Fork sensor for label detection
- ▶ Electronics specially designed for label detection
- ▶ 3mm slot width
- ▶ AutoTeach or settings via potentiometer
- ▶ NPN or PNP, light-on or dark-on in the same device
- ▶ Robust aluminium housing

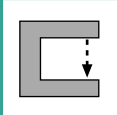


**FORK SENSOR FLS03
for label detection**

▶ TECHNICAL DATA

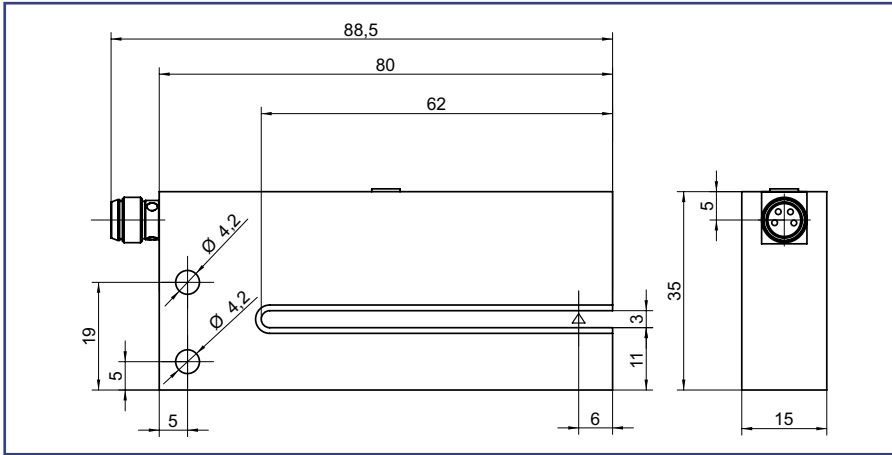
MODEL	FLSP03AP/N	FLST03AP/N
Resolution	0,5mm	1mm
Reproducibility	0,1mm	
Hysteresis	<0,4mm	
Operating voltage	10...30 VDC, reverse polarity protection	
Current consumption	< 40mA	
Output	Push-/Pull; PNP/NPN	
Output current	200mA	
Function indicator	LED green	
max. Frequency response	10kHz	
Functional principle	continuous light	
Switching function	light-on or dark-on (selectable)	
Light type	infrared 880nm	
Response time	50µs	
Sensitivity adjustment	potentiometer, multiturn	key or external teach-input
Housing material	aluminium, black anodized	
Operating temperature	-10°C.. +60°C	
Protection class	IP65	
max. Light immunity	3000 lux	
Connector	M8, 4pin	

* supply cable to be ordered separately



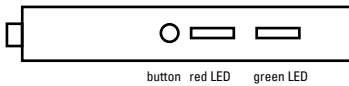
FLS03

► **DIMENSIONS** Measurements in mm. Subject to technical change.



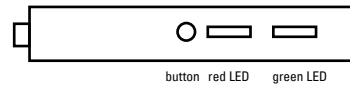
► **SET UP INSTRUCTION**

FLST03-AP/N



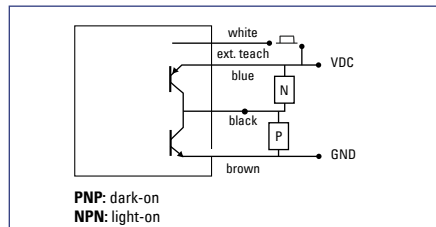
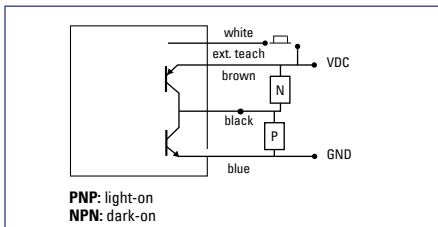
- | | |
|--|---|
| 1. insert label, then push button (or remote: min. 50ms) | red LED blinking slow, regardless if button is pressed or not, teach-in mode starts |
| 2. move label through the sensor, min. 3 labels | teach-in mode still active |
| 3. push button again, (or remote: min. 50ms) | teach-in procedure is finished |
| 4. if no label is detected | red LED blinking fast |
| 5. after succesful teach-in | green LED on (without label) |

FLSP03-AP/N

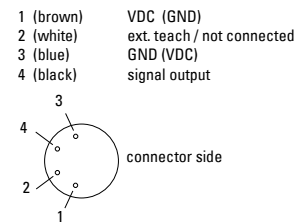


1. insert label backing
2. turn potentiometer to the left until red LED lights
3. turn potentiometer to the right until green LED lights
4. turn potentiometer 1 to 3 rotations further to the right
5. after successful teach-in:
 - red LED on with label
 - green LED on without label

► **CONNECTION DIAGRAM**



► **PIN CONNECTION**



for **FLST03-AP/N**: PIN 2: remote teach-in
if the remote teach-in (white) is not used, link it to GND!

for **FLSP03-AP/N**: PIN 2: not connected

PART DESIGNATION

FLSP03-AP/N	=	fork width 3mm	potentiometer	light-on or dark-on	PNP or NPN output
FLST03-AP/N	=	fork width 3mm	auto teach	light-on or dark-on	PNP or NPN output

Please do not forget to order the appropriate power supply cable (see accessories).