



- ▶ Fork sensors are ready-to-use, versatile through beam sensors
- ▶ No elaborate adjustments necessary
- ▶ High resolution
- ▶ 9 different standard fork widths
- ▶ Tried and tested thousands of times in many industrial areas

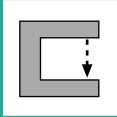


**STANDARD FORK SENSOR  
with integrated amplifier**

▶ TECHNICAL DATA

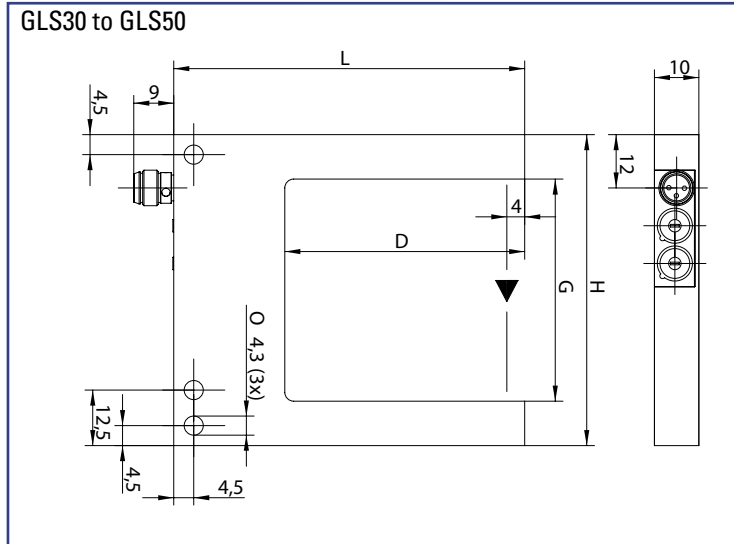
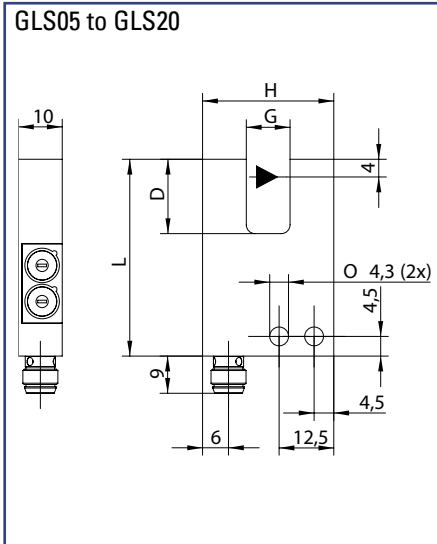
MODEL	GLS05R		GLS10R		GLS20R		GLS30R		GLS50R	
Fork width (mm)	5mm		10mm		20mm		30mm		50mm	
Resolution	0,3mm		0,3mm		0,3mm		0,3mm		0,4mm	
Reproducibility	0,02mm		0,02mm		0,02mm		0,02mm		0,04mm	
Hysteresis	< 0,1mm		< 0,1mm		< 0,1mm		< 0,1mm		< 0,15mm	
Operating voltage	10...30 VDC, reverse polarity protection									
Current consumption	< 25mA		< 25mA		< 35mA		< 35mA		< 35mA	
Output	PNP	NPN	PNP	NPN	PNP	NPN	PNP	NPN	PNP	NPN
Output current	max. 200mA, short circuit proof									
Function indicator	LED, red (on the connector)									
Frequency response	3000Hz		3000Hz		1500Hz		1500Hz		1500Hz	
Functional principle	pulsed									
Switching function	light-on or dark-on (selectable)									
Light type	red, 636nm									
Response time	max. 0,33ms		max. 0,33ms		max. 0,33ms		max. 0,33ms		max. 0,33ms	
Sensitivity adjustment	potentiometer, 270°									
Housing material	die-cast zinc									
Operating temperature	-10°C.. +60°C									
Protection class	IP67									
Connector	M8, 3pin *									

\* supply cable to be ordered separately



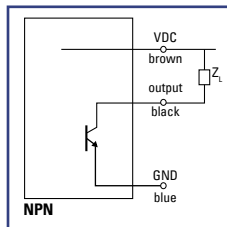
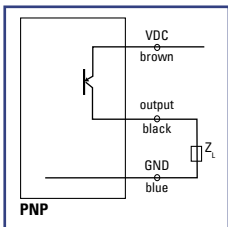
GLS05 to GLS50

► DIMENSIONS Measurements in mm. Subject to technical change.



MODEL	G:	D:	L:	H:
GLS05R	5mm	17mm	45mm	25mm
GLS10R	10mm	17mm	45mm	30mm
GLS20R	20mm	24mm	49mm	40mm
GLS30R	30mm	34mm	59mm	50mm
GLS50R	50mm	54mm	79mm	70mm

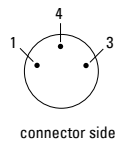
► CONNECTION DIAGRAM



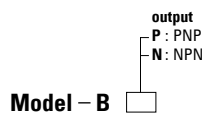
► PIN CONNECTION

connector M8, 3pin

- 1 (brown) + VDC
- 4 (black) signal output
- 3 (blue) - GND



PART DESIGNATION



ORDER EXAMPLE

GLS30R-BP = GLS30R fork width 30mm red light - pulsed output PNP

Please do not forget to order the appropriate power supply cable (see accessories).