



- ▶ Robust through beam sensor for detection of water in transparent containers
- ▶ With integrated evaluation electronics
- ▶ Wavelength adapted to the absorption spectrum of water
- ▶ Works also reliably for the detection of water based liquids and vapors
- ▶ For reliable and precise level identification
- ▶ Easy to mount - no alignment



FORK SENSOR FOR WATER DETECTION with integrated amplifier

▶ TECHNICAL DATA

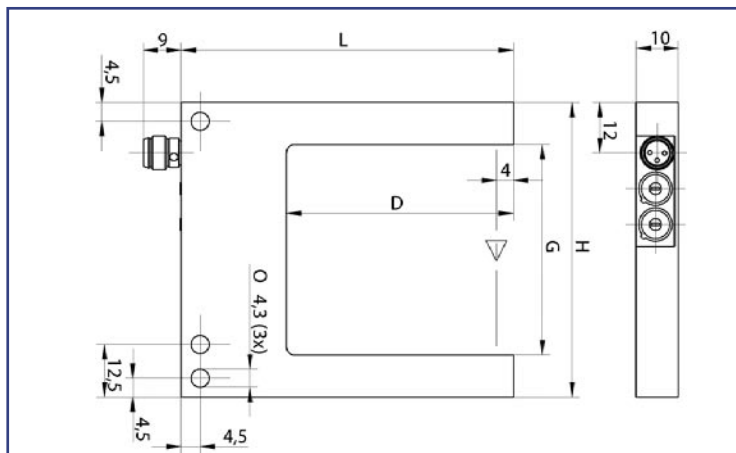
MODEL	GLS30JJ		GLS50JJ		GLS80JJ	
Fork width (mm)	30mm		50mm		80mm	
Resolution	0,6mm		0,8mm		0,8mm	
Reproducibility	0,1mm		0,1mm		0,1mm	
Hysteresis	< 0,2mm		< 0,2mm		< 0,2mm	
Operating voltage	10...30 VDC, reverse polarity protection					
Current consumption	< 35mA		< 35mA		< 35mA	
Output	PNP	NPN	PNP	NPN	PNP	NPN
Output current	max. 200mA, short circuit proof					
Function indicator	LED, red (on the connector)					
Frequency response	2000Hz		2000Hz		2000Hz	
Functional principle	pulsed					
Switching function	light-on or dark-on (selectable)					
Light type	infrared, 1480nm					
Response time	max. 0,25ms		max. 0,25ms		max. 0,25ms	
Sensitivity adjustment	potentiometer, 270°					
Housing material	die-cast zinc					
Operating temperature	-10°C.. +60°C					
Protection class	IP67					
Connector	M8, 3pin *					

* supply cable to be ordered separately

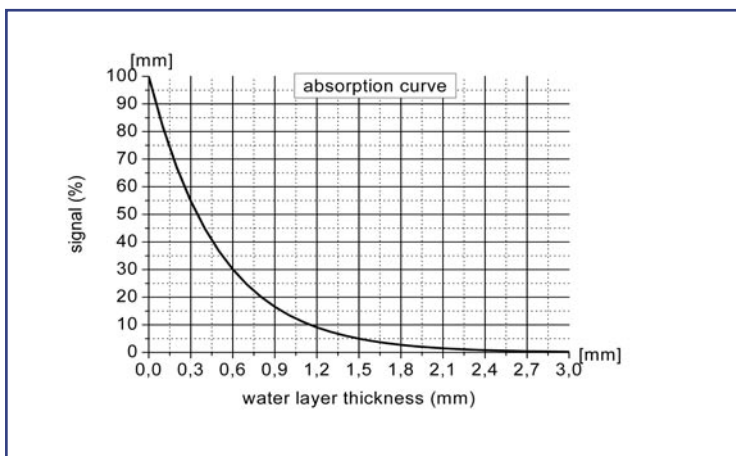


GLS30JJ | GLS50JJ | GLS80JJ

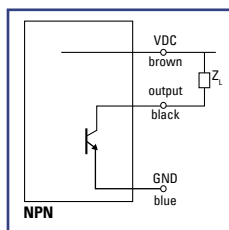
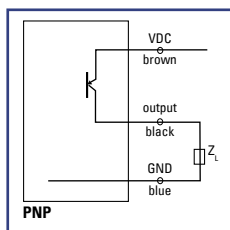
► DIMENSIONS Measurements in mm. Subject to technical change.



MODEL	G:	D:	L:	H:
GLS30JJ	30mm	34mm	68mm	50mm
GLS50JJ	50mm	54mm	88mm	70mm
GLS80JJ	80mm	54mm	88mm	100mm



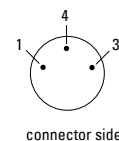
► CONNECTION DIAGRAM



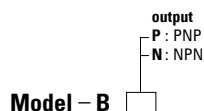
► PIN CONNECTION

connector M8, 3pin

- 1 (brown) + VDC
- 4 (black) signal output
- 3 (blue) - GND



PART DESIGNATION



ORDER EXAMPLE

GLS30JJ-BP = GLS30JJ for water detection fork width 30mm infrared light 1480nm - pulsed output PNP

Please do not forget to order the appropriate power supply cable (see accessories).