



- ▶ Fork sensors are ready-to-use, versatile through beam sensors
- ▶ No elaborate adjustments necessary
- ▶ High resolution
- ▶ 9 different standard fork widths
- ▶ Tried and tested thousands of times in many industrial areas

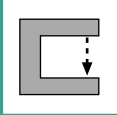


**STANDARD FORK SENSOR
with integrated amplifier**

▶ TECHNICAL DATA

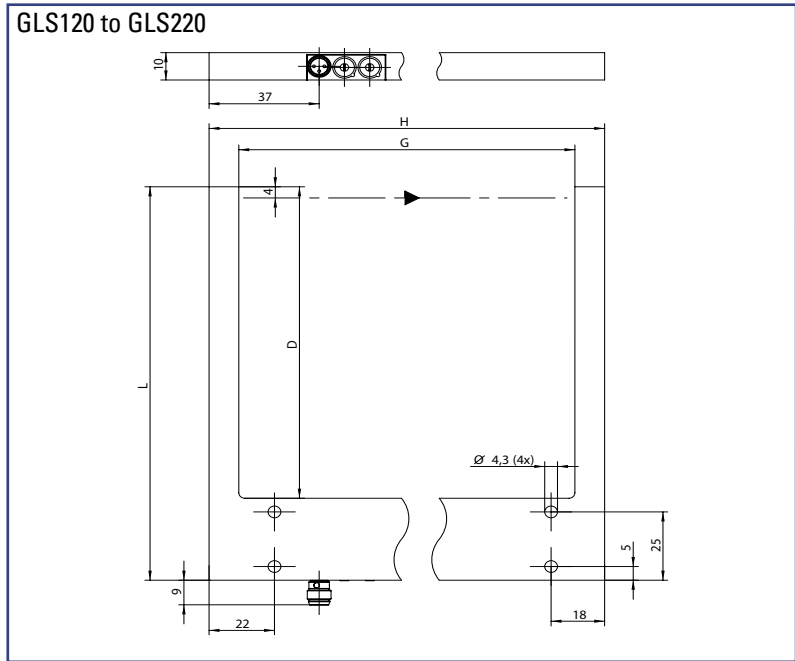
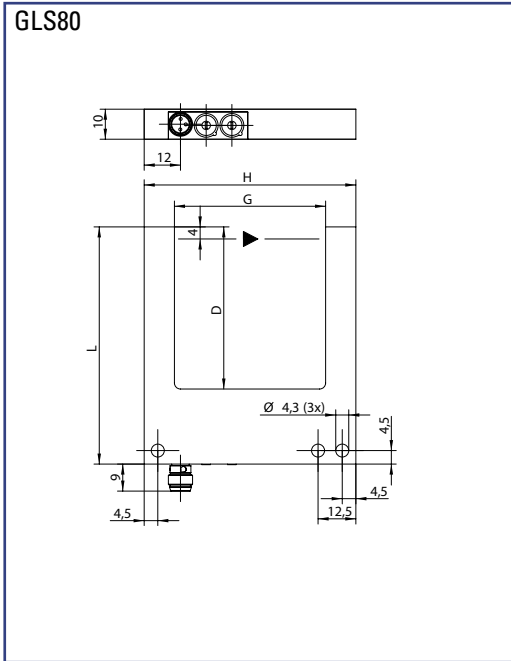
MODEL	GLS80R		GLS120R		GLS180R		GLS220R	
Fork width (mm)	80mm		120mm		180mm		220mm	
Resolution	0,4mm		0,5mm		0,6mm		0,6mm	
Reproducibility	0,06mm		0,08mm		0,08mm		0,08mm	
Hysteresis	< 0,2mm							
Operating voltage	10...30 VDC, reverse polarity protection							
Current consumption	< 35mA		< 35mA		< 30mA		< 30mA	
Output	PNP	NPN	PNP	NPN	PNP	NPN	PNP	NPN
Output current	max. 200mA, short circuit proof							
Function indicator	LED, red (on the connector)							
Frequency response	1500Hz							
Functional principle	pulsed							
Switching function	light-on or dark-on (selectable)							
Light type	red, 636nm							
Response time	max. 0,33ms							
Sensitivity adjustment	potentiometer, 270°							
Housing material	die-cast zinc							
Operating temperature	-10°C.. +60°C							
Protection class	IP67							
Connector	M8, 3pin *							

* supply cable to be ordered separately



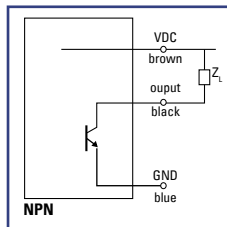
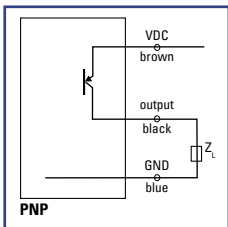
GLS80 to GLS220

► DIMENSIONS Measurements in mm. Subject to technical change.



MODEL	G:	D:	L:	H:
GLS80R	80mm	54mm	79mm	100mm
GLS120R	120mm	54mm	84mm	140mm
GLS180R	180mm	114mm	144mm	200mm
GLS220R	220mm	114mm	144mm	240mm

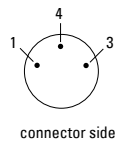
► CONNECTION DIAGRAM



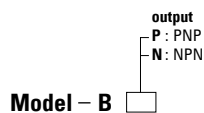
► PIN CONNECTION

connector M8, 3pin

- 1 (brown) + VDC
- 4 (black) signal output
- 3 (blue) - GND



PART DESIGNATION



ORDER EXAMPLE

GLS80R-BP = GLS80R fork width 80mm - red light - pulsed output PNP

Please do not forget to order the appropriate power supply cable (see accessories).