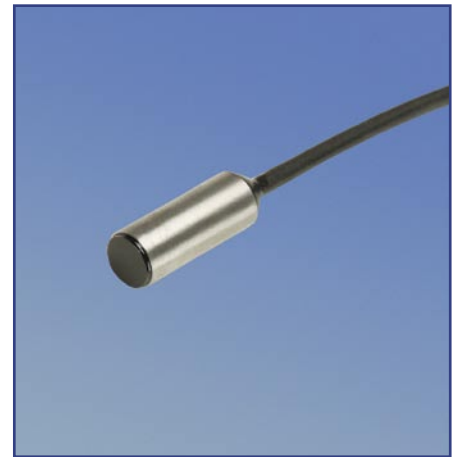


- ▶ MICROmote®-sensor for separate amplifier in compact cylindrical design
- ▶ Powerful reflective beam sensor with efficient optics
- ▶ The perfect light spot from microSPOT technology allows the precise detection of even the smallest objects
- ▶ Flexible connection cables - no minimum bending radius requirement as with optical fibers



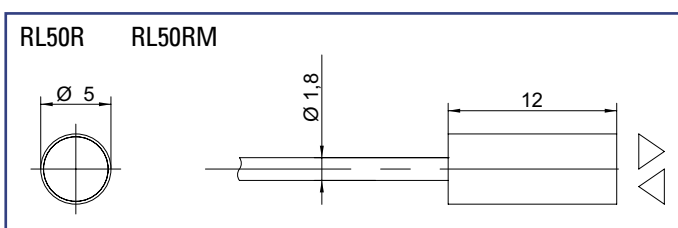
**REFLECTIVE BEAM SENSOR
for separate amplifier**

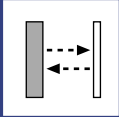
▶ **TECHNICAL DATA**

MODEL	RL50R	RL50RM
Light type	red 660nm	micro ● SPOT®** 645nm
Operating temperature	-10°C to +55°C	
Protection class	IP65	
Sensing distance	60mm*	
	800mm on reflector R35	
Lightspot diameter at 50mm	14mm	5mm
Connection	PUR-cable with connector	
Dimensions	Ø 5mm x 12mm	
Housing material	stainless steel	
Mounting	for gluing or clamping fixture	

* on white non glossy paper (90% remission, 100x100mm)
 ** registered Trademark of STM GmbH

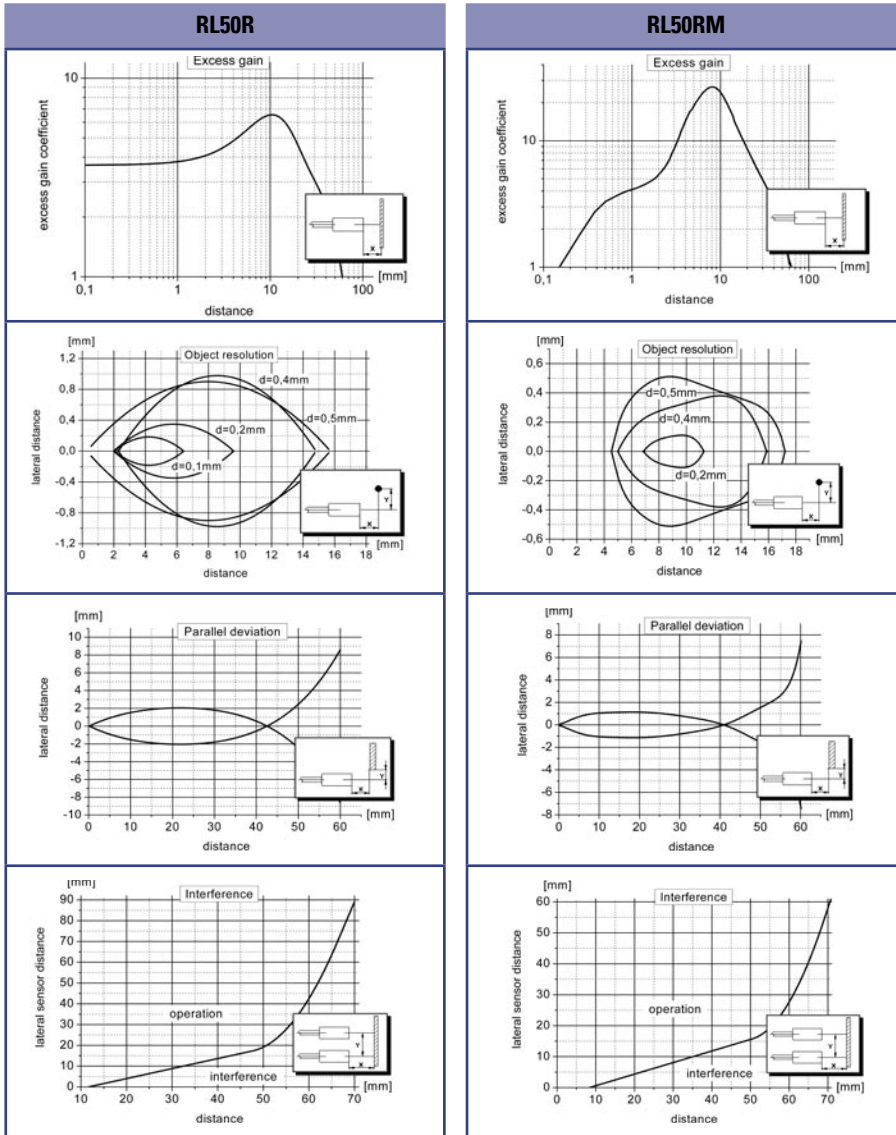
▶ **DIMENSIONS** Measurements in mm. Subject to technical change.





RL50R | RL50RM

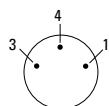
► **GRAPHS** (All Graphs showing typical data with STM amplifier.)



► **PIN CONNECTION**

option - 0: M8, 3pin (standard)

- 3 + receiver (green)
- 4 GND/shielding (white, black)
- 1 + emitter (red)



connector side

jacket material
P: PUR-cable black Ø 1,8mm
F: highly flexible PUR-cable red Ø 1,1mm

connector
0: M8 - connector 3pin
 special model available on request

cable length (specification in [m])
 - standard length 1m
 - special cable length available on request

PART DESIGNATION

Model - [] - [] : []

ORDER EXAMPLE

RL50R - P - 0 : 1m = RL50 red light - PUR-cable black - M8,3pin : cable length 1m

Please note, for correct operation, a separate amplifier is required.