



- ▶ MICROmote®-sensor for separate amplifier in super-flat 3mm housing
- ▶ High-performance light sensor with effective nanoSPOT optics: laser-like light beam - tiny light spot
- ▶ The flat aluminium housings can be stacked without difficulty and combined into a sensor matrix
- ▶ The glass cover protects the optics even under rugged operating conditions



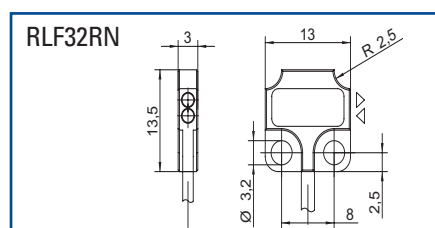
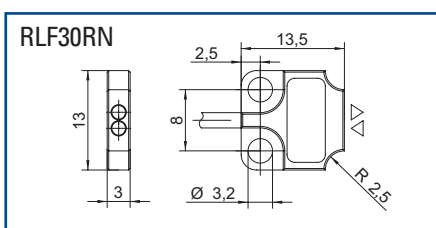
REFLECTIVE BEAM SENSOR for separate amplifier

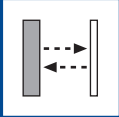
▶ TECHNICAL DATA

MODEL	RLF30RN	RLF32RN
Light type	nano • SPOT® *** 645nm	
Operating temperature	-10°C to +55°C	
Protection class	IP67	
Sensing distance	25mm ***	
	600mm on reflector R35	
Connection type	PUR-cable with connector	
Dimensions	1mm	
Housing material	13,5mm x 13mm x 3mm	
Mounting	aluminium, natur anodized	
Befestigungsart	for screw-on fixture	

* min. detecting distance 3.5mm
 ** registered Trademark of STM GmbH
 *** on white non glossy paper (90% remission, 100x100mm)

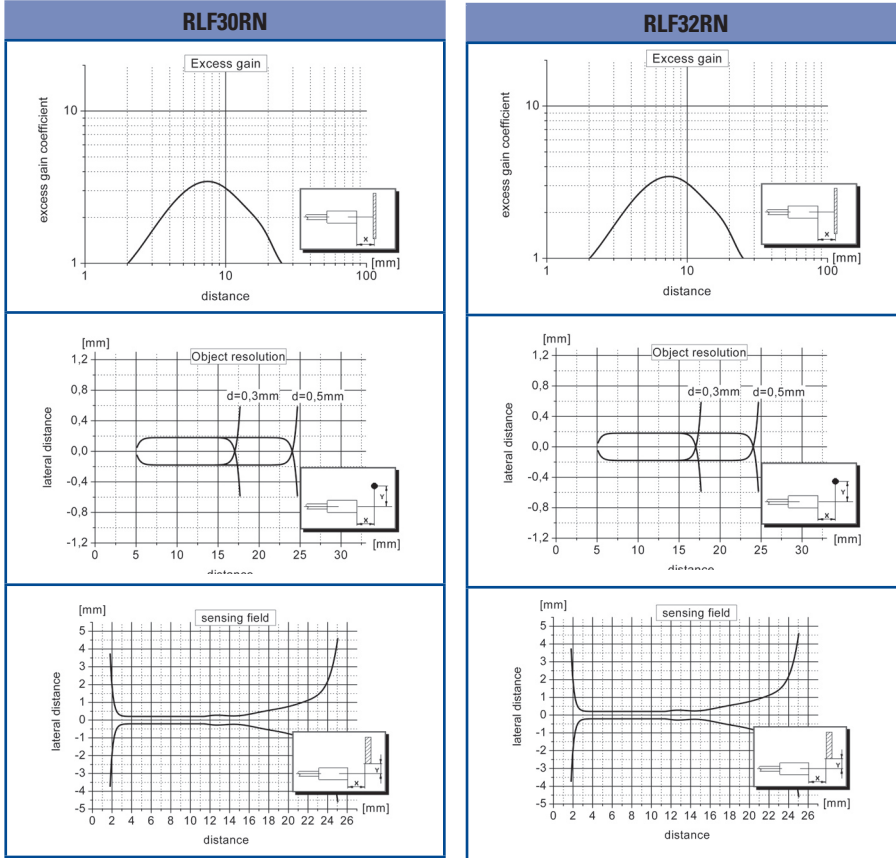
▶ DIMENSIONS Measurements in mm. Subject to technical change.





RLF30RN | RLF32RN

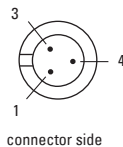
► **GRAPHS** (All Graphs showing typical data with STM amplifier.)



► **PIN CONNECTION**

option - 2: 719, 3pin (standard)

- 3 + receiver (green)
- 4 GND/shielding (white, black)
- 1 + emitter (red)



	<p>jacket material</p> <ul style="list-style-type: none"> P: PUR-cable black ø 1,8mm F: highly flexible PUR-cable red ø 1,1mm 	<p>connector</p> <ul style="list-style-type: none"> 2: 719 - connector 3pin special model available on request 	<p>cable length (specification in [m])</p> <ul style="list-style-type: none"> standard length 1m special cable length available on request
PART DESIGNATION	<p>Model - <input type="text"/> - <input type="text"/> : <input type="text"/></p>		
ORDER EXAMPLE	<p>RLF30RN - P - 2 : 1m = RLF30 nanospot - PUR-cable black - 719, 3pin : cable length 1m</p> <p>Please note, for correct operation, a separate nanoSPOT-amplifier is required.</p>		