

- ▶ MICROmote®-sensor for separate amplifier in super flat 3 mm housing
- ▶ High performance light sensors with effective laser-like microSPOT optics: circular beam - smaller light spot
- ▶ The flat aluminium housings can be stacked without difficulty and combined into a sensor matrix
- ▶ The glass cover protects the optics even under rugged operating conditions



REFLECTIVE BEAM SENSOR for separate amplifier

▶ TECHNICAL DATA

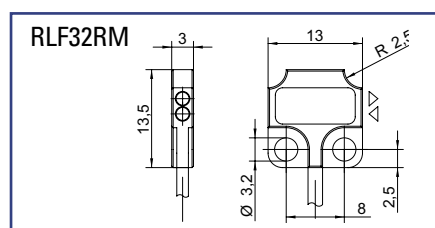
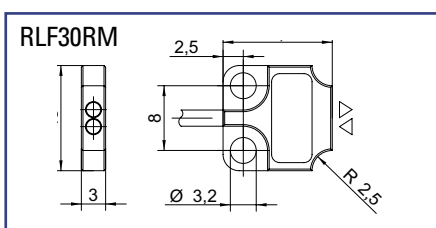
MODEL	RLF30RM	RLF32RM
Light type	micro SPOT® ** 645nm	
Operating temperature	-10°C to +55°C	
Protection class	IP67	
Sensing distance	60mm***	
	1000mm on reflector R35	
Connection type	PUR-cable with connector	
Lightspot diameter at 50mm	5mm	
Dimensions	13,5mm x 13mm x 3mm	
Housing material	aluminium, natur anodized	
Mounting	for screw-in fixture	

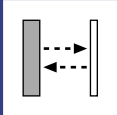
* min. detecting distance 3.5mm

** registered Trademark of STM GmbH

*** on white non glossy paper (90% remission, 100x100mm)

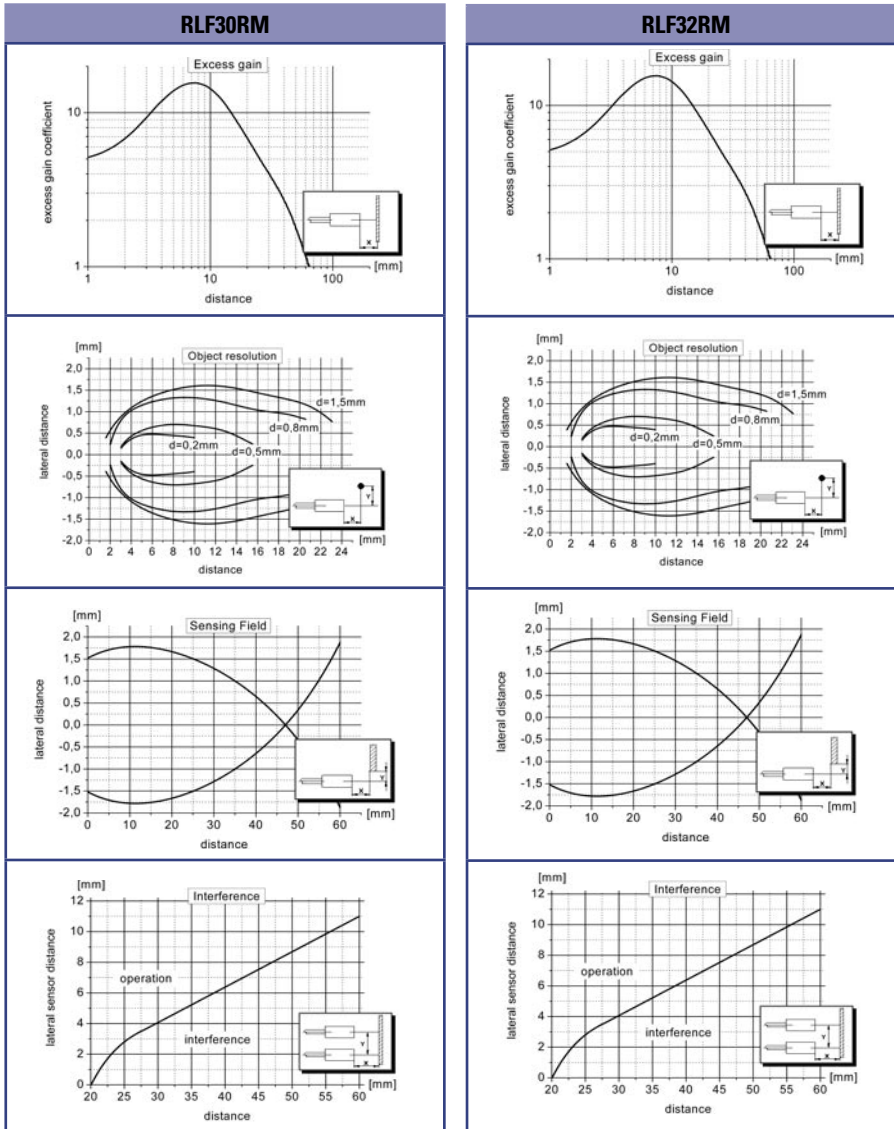
▶ DIMENSIONS Measurements in mm. Subject to technical change.





RLF30RM | RLF32RM

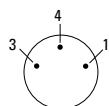
► **GRAPHS** (All Graphs showing typical data with STM amplifier.)



► **PIN CONNECTION**

option - 0: M8, 3pin (standard)

- 3 + receiver (green)
- 4 GND/shielding (white, black)
- 1 + emitter (red)



connector side

	<p>jacket material P: PUR-cable black \varnothing 1,8mm F: highly flexible PUR-cable red \varnothing 1,1mm</p>	<p>connector 0: M8 - connector 3pin special model available on request</p>	<p>cable length (specification in [m]) standard length 1m special cable length available on request</p>
PART DESIGNATION	<p>Model - <input type="text"/> - <input type="text"/> : <input type="text"/></p>		

ORDER EXAMPLE	<p>RLF30RM - P - 0 : 1m = RLF30 microspot - PUR-cable black - M8, 3pin : cable length 1m Please note, for correct operation, a separate amplifier is required.</p>
----------------------	--