



- ▶ **MICROmote®** -sensor for separate amplifier in flat design
- ▶ **Powerfull light sensor with effective microSPOT optics**
- ▶ **Near parallel light beam - small light spot**
- ▶ **Function reserve, robust metal housing, and glass-protected optics ensure use even under the most rugged operating conditions**



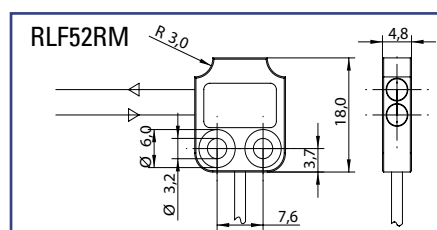
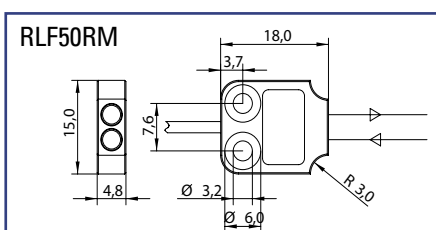
**REFLECTIVE BEAM SENSOR  
for separate amplifier**

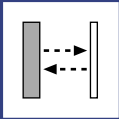
▶ **TECHNICAL DATA**

MODEL	RLF50RM	RLF52RM
Light type	micro ● SPOT® ** 645nm	
Operating temperature	-10°C to +55°C	
Protection class	IP67	
Sensing distance	100mm ***	
	1200mm on reflector R35	
Lightspot diameter at 100mm	8,0mm	
Connection type	PUR-cable with connector	
Dimensions	18mm x 15mm x 4,8mm	
Housing material	aluminium, natur anodized	
Mounting	for screw-in fixture	

\* min. detecting distance 3.5mm  
 \*\* registered Trademark of STM GmbH  
 \*\*\* on white non glossy paper (90% remission, 100x100mm)

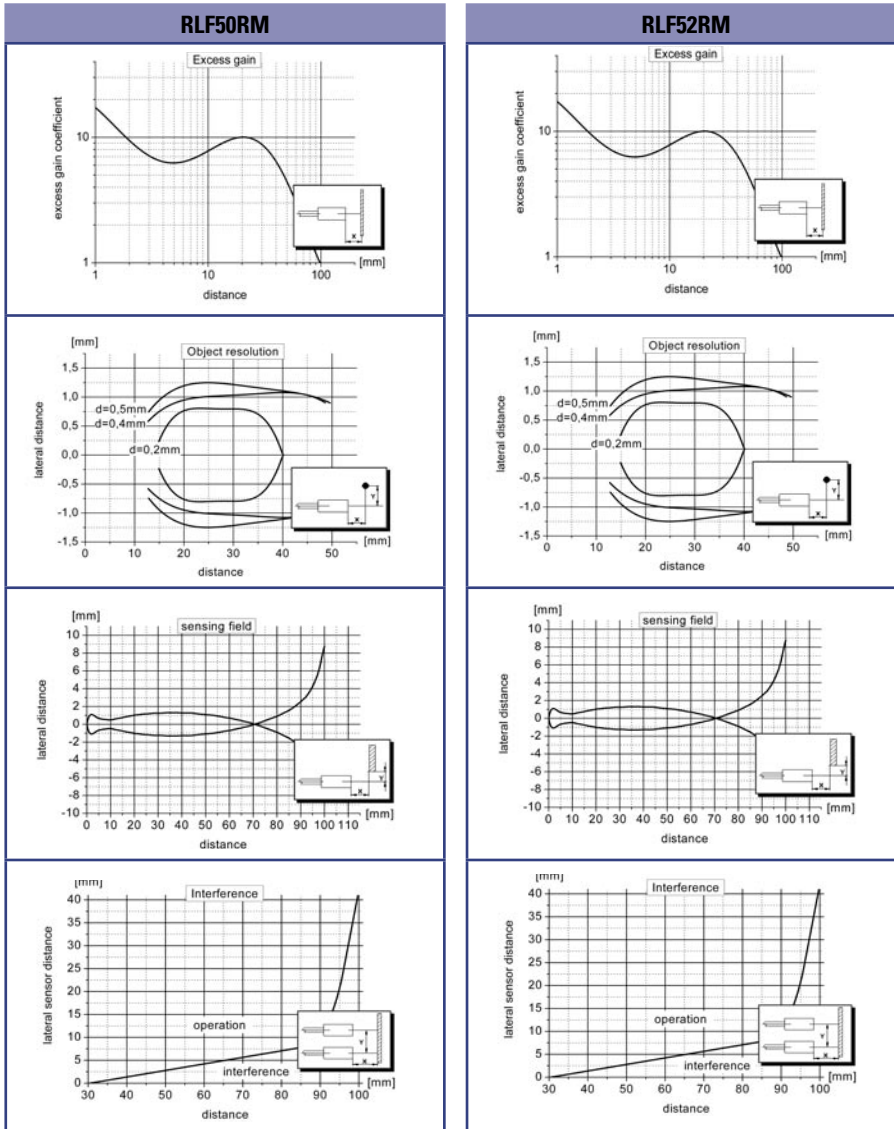
▶ **DIMENSIONS** Measurements in mm. Subject to technical change.





**RLF50RM | RLF52RM**

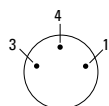
► **GRAPHS** (All Graphs showing typical data with STM amplifier.)



► **PIN CONNECTION**

option - 0: M8, 3pin (standard)

- 3 + receiver (green)
- 4 GND/shielding (white, black)
- 1 + emitter (red)



connector side

	<p><b>jacket material</b></p> <p><b>P</b>: PUR-cable black <math>\varnothing</math> 1,8mm</p> <p><b>F</b>: highly flexible PUR-cable red <math>\varnothing</math> 1,1mm</p>	<p><b>connector</b></p> <p><b>0</b>: M8 - connector 3pin</p> <p>special model available on request</p>	<p><b>cable length</b> (specification in [m])</p> <p>standard length 1m</p> <p>special cable length available on request</p>
<b>PART DESIGNATION</b>	<b>Model</b> - [ ] - [ ] : [ ]		

<b>ORDER EXAMPLE</b>	<p><b>RLF50RM - P - 0 : 1m</b> = RLF50 microspot - PUR-cable black - M8, 3pin : cable length 1m</p> <p>Please note, for correct operation, a separate amplifier is required.</p>
----------------------	--