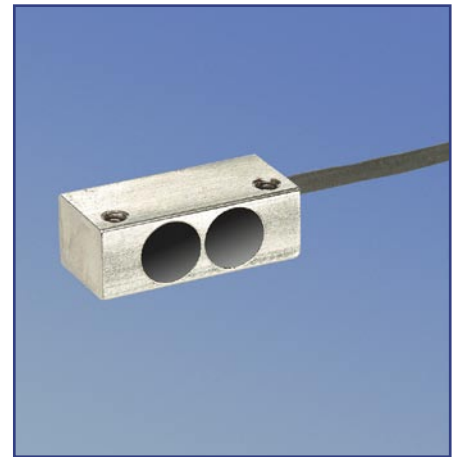


- ▶ **MICROmote®**-sensor for separate amplifier in cuboid housing
- ▶ **Efficient optics allow long ranges, despite the especially compact design**
- ▶ **The highly flexible connection cable allows trouble-free installation without minimum bend radius requirements**
- ▶ **The robust metal housing can be installed in machine parts without difficulties**



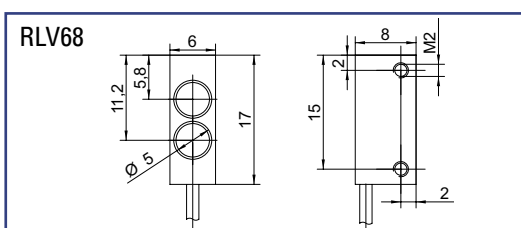
**REFLECTIVE BEAM SENSOR  
for separate amplifier**

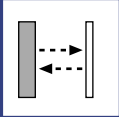
▶ **TECHNICAL DATA**

MODEL	RLV68
Light type	infrared 880nm
Operating temperature	-10°C to +55°C
Protection class	IP65
Sensing distance	max. 200mm*
	3000mm on reflector R35
Connection type	PUR-cable with connector
Dimensions	6mm x 8mm x 17mm
Housing material	nickel-plated brass
Mounting	for screw-in fixture

\* on white non glossy Paper (90% remission, 100x100mm)

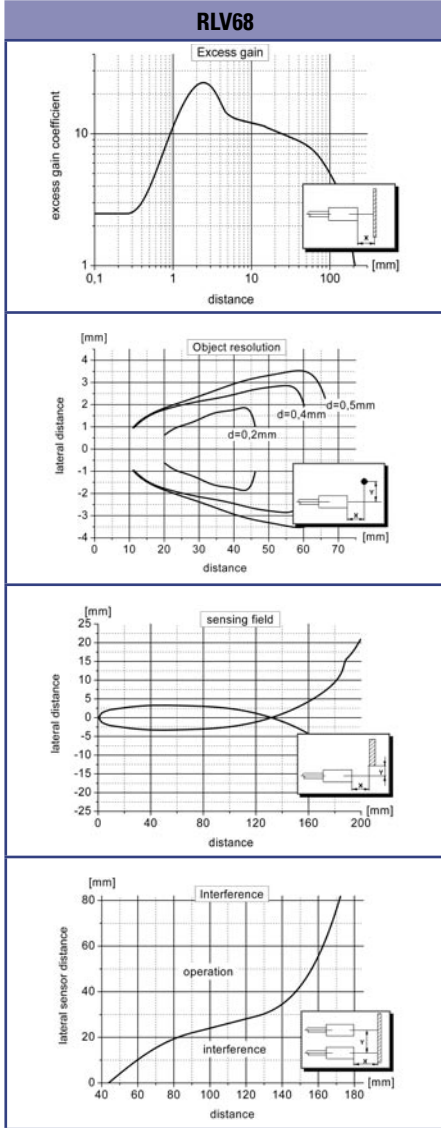
▶ **DIMENSIONS** Measurements in mm. Subject to technical change.





**RLV68**

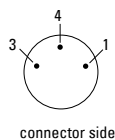
► **GRAPHS** (All Graphs showing typical data with STM amplifier.)



► **PIN CONNECTION**

option - 0: M8, 3pin (standard)

- 3 + receiver (green)
- 4 GND/shielding (black, white)
- 1 + emitter (red)



	<p><b>jacket material</b></p> <p>P: PUR-cable black ø 1,8mm</p> <p>F: highly flexible PUR-cable red ø 1,1mm</p>	<p><b>connector</b></p> <p>0: M8 - connector 3pin</p> <p>special model available on request</p>	<p><b>cable length</b> (specification in [m])</p> <p>standard length 1m</p> <p>special cable length available on request</p>
<b>PART DESIGNATION</b>	<p><b>Model</b> - <input type="text"/> - <input type="text"/> : <input type="text"/></p>		
<b>ORDER EXAMPLE</b>	<p><b>RLV68 - P - 0 : 1m</b> = RLV68 infrared - PUR-cable red - M8,3pin : cable length 1m</p> <p>Please note, for correct operation, a separate amplifier is required.</p>		