

- ▶ **MICROmote®** -sensor for separate amplifier for applications over long distances to the reflector
- ▶ The light beam with a beam angle of 0.5° guarantees high object resolution even at large distances from the reflector
- ▶ The glass cover protects the optics even under rugged operating conditions



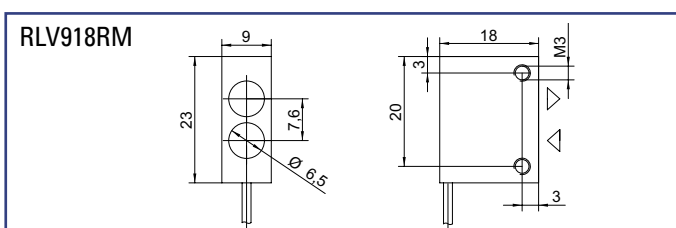
**REFLECTIVE BEAM SENSORS**  
for separate amplifier

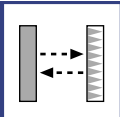
▶ **TECHNICAL DATA**

MODEL	RLV918RM
Light type	micro ● SPOT® * 645nm
Operating temperature	-10°C to +55°C
Protection class	IP65
Operating voltage	10...30 VDC, reverse polarity protection
Sensing distance	5m on reflector R35
Lightspot diameter at 1m:	18mm
Connection type	PUR-cable with connector
Dimensions	9mm x 18mm x 23mm
Housing material	nickel-plated brass
Mounting	for screw-in fixture

\*registered Trademark of STM GmbH

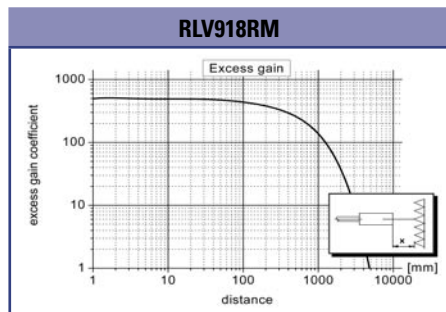
▶ **DIMENSIONS** Measurements in mm. Subject to technical change.





# RLV918RM

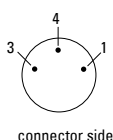
► **GRAPHS** (All Graphs showing typical data with STM amplifier.)



► **PIN CONNECTION**

option - 0: M8, 3pin (standard)

- 3 + receiver (green)
- 4 GND/shielding (white, black)
- 1 + emitter (red)



	<p><b>jacket material</b>  <b>P</b>: PUR-cable black ø 1,8mm  <b>F</b>: highly flexible PUR-cable red ø 1,1mm</p>	<p><b>connector</b>  <b>0</b>: M8 - connector 3pin                  special model available on request</p>	<p><b>cable length</b> (specification in [m])                  - standard length 1m                  - special cable length available on request</p>
<b>PART DESIGNATION</b>	<p><b>Model</b> - <input type="text"/> - <input type="text"/> : <input type="text"/></p>		
<b>ORDER EXAMPLE</b>	<p><b>RLV918RM - P - 0 : 1m</b> = RLV918 microSPOT - PUR-cable black - M8, 3pin : cable length 1m                  Please note, for correct operation, a separate amplifier is required.</p>		