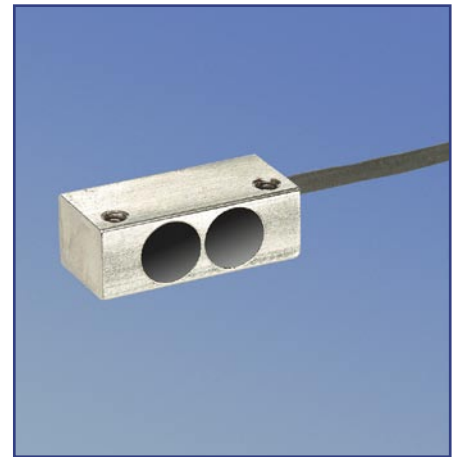


- ▶ MICROmote® -sensor for separate amplifier in cuboid mini-housing
- ▶ Powerfull reflective sensors with effective polarizing filters
- ▶ An advantageous solution when sender/receiver sensors cannot be used for reasons of space
- ▶ Ideal for detecting transparent objects, foils, etc.

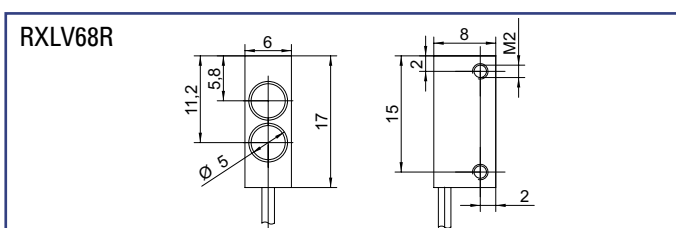


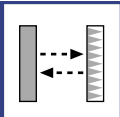
**REFLECTIVE BEAM SENSOR**  
for separate amplifier

▶ **TECHNICAL DATA**

MODEL	RXLV68R
Light type	red 660nm
Operating temperature	-10°C to +55°C
Protection class	IP65
Sensing distance	1000mm on triple reflector R35 (im Lieferumfang enthalten)
Connection	PUR-cable with connector
Dimensions	6mm x 8mm x 17mm
Housing material	nickel-plated brass
Mounting	for screw-in fixture

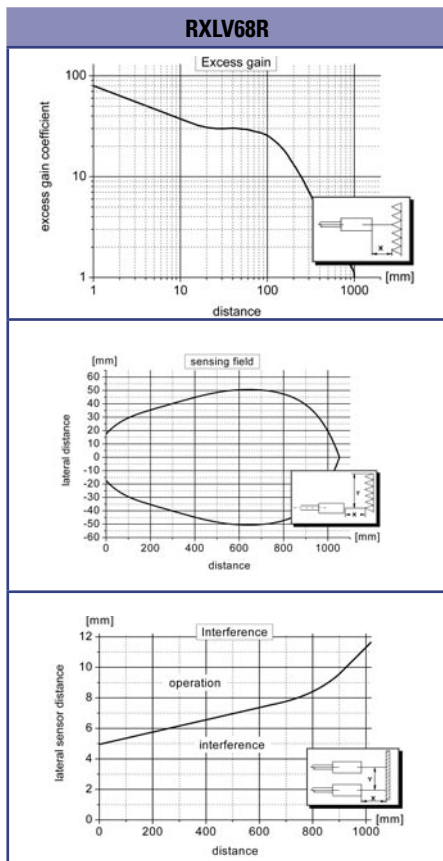
▶ **DIMENSIONS** Measurements in mm. Subject to technical change.





# RXLV68R

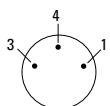
► **GRAPHS** (All Graphs showing typical data with STM amplifier.)



► **PIN CONNECTION**

option - 0: M8, 3pin (standard)

- 3 + receiver (green)
- 4 GND/shielding (white, black)
- 1 + emitter (red)



connector side

	<p><b>jacket material</b></p> <p><b>P</b>: PUR-cable black ø 1,8mm</p> <p><b>F</b>: highly flexible PUR-cable red ø 1,1mm</p>	<p><b>connector</b></p> <p><b>0</b>: M8 - connector 3pin</p> <p>special model available on request</p>	<p><b>cable length</b> (specification in [m])</p> <p>standard length 1m</p> <p>special cable length available on request</p>
<b>PART DESIGNATION</b>	<p><b>Model</b> - <input type="text"/> - <input type="text"/> : <input type="text"/></p>		
<b>ORDER EXAMPLE</b>	<p><b>RXLV68R - P - 0 : 1m</b> = RXLV68 red light - PUR-cable black - M8,3pin : cable length 1m</p> <p>Please note, for correct operation, a separate amplifier is required.</p>		